

CHEM**BIO**CHEM

Supporting Information

© Copyright Wiley-VCH Verlag GmbH & Co. KGaA, 69451 Weinheim, 2009

Supporting Information

for

Structural Effects on ss- and dsDNA Recognition by a β -Hairpin Peptide

Amanda L. Stewart and Marcey L. Waters

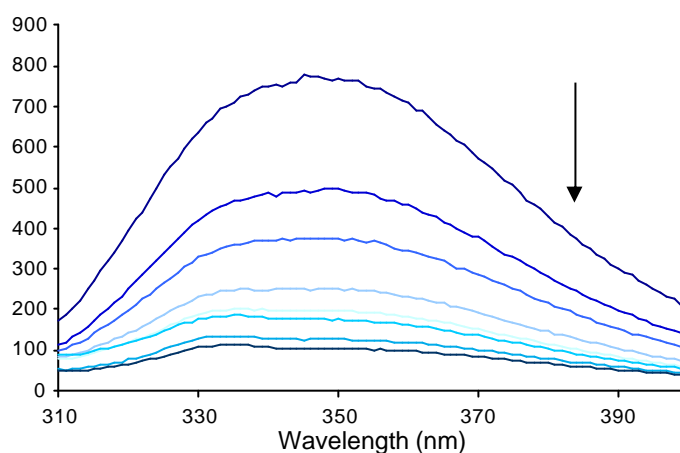


Figure S1. Fluorescence quenching of $(D-WKWK)_2$ ($2 \mu M$) by ssDNA (Figure 2e, 0-60 μM), in 10 mM sodium phosphate buffer, 100 mM NaCl, pH 7.0.

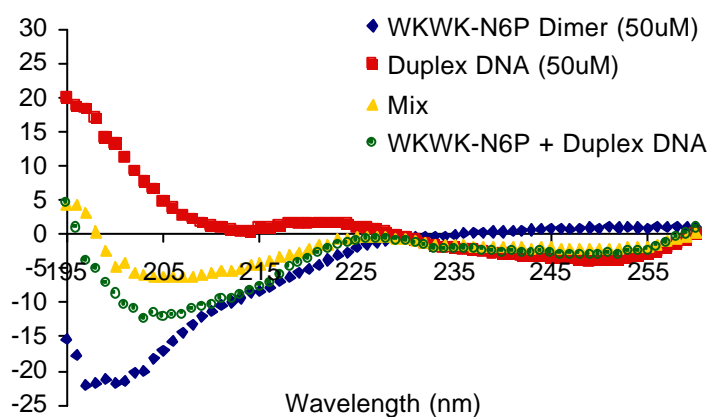


Figure S2. CD spectrum of $(WKWK-N6P)_2$ (blue), duplex DNA (red), the additive spectrum (green), and a 1:1 mixture (yellow). Differences in the green and yellow spectra are likely due to errors in concentration measurement.

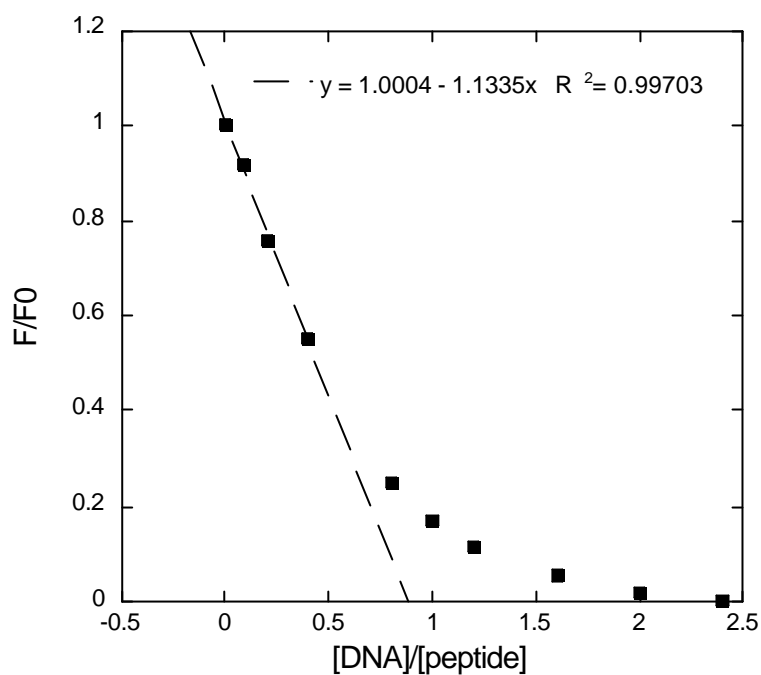


Figure S3. Molar variation plot for (WKWK)₂ (25 μM) binding to ssDNA (0-60 μM). A 1:1 binding interaction was demonstrated with the average of two runs in 10 mM Na₂HPO₄, 100 mM NaCl, pH 7.0.

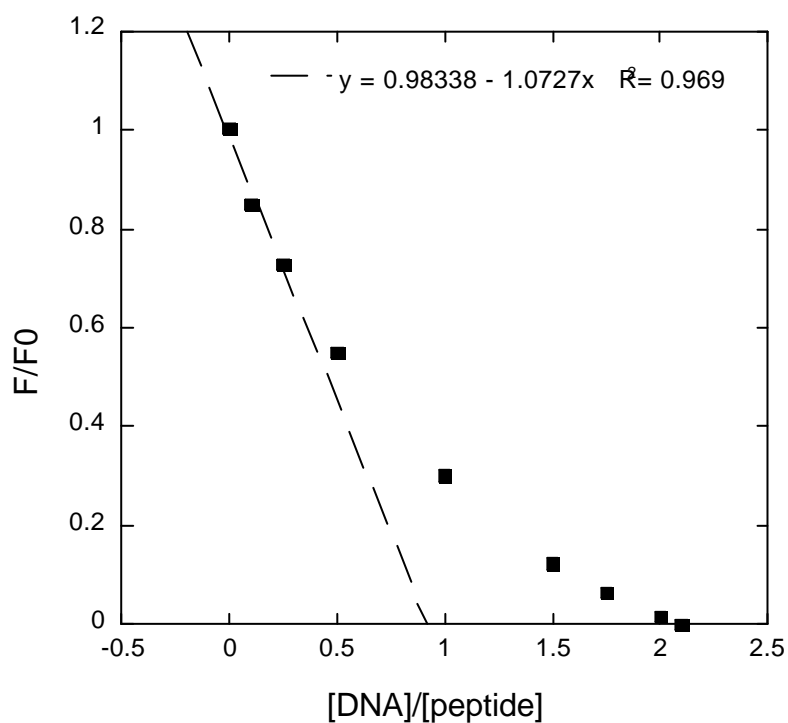


Figure S4. Molar variation plot for (WKWK)₂ (20 μM) binding to duplex DNA (0-42 μM). A 1:1 binding interaction was determined in 10 mM Na₂HPO₄, 100 mM NaCl, pH 7.0.